



Queens Economic  
Development Corporation

# South Richmond Hill

## Neighborhood Profile (2011)

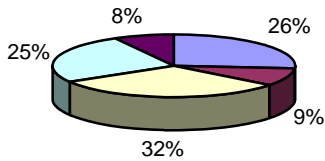


Queens Economic Development Corporation  
Neighborhood Economic Development Division  
120-55 Queens Blvd. Suite 309  
Kew Gardens, NY 11424  
Phone: (718) 263-0546  
Fax: (718) 253-0594  
[www.queensny.org](http://www.queensny.org)

## Neighborhood Overview

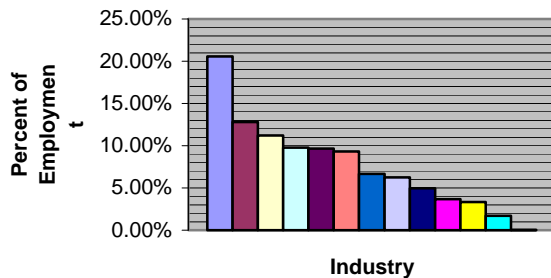
Located in central Queens, Richmond Hill is bordered to the north by Kew Gardens, to the west by Woodhaven and Ozone Park, and to the east by Jamaica. The neighborhood is part of both Queens Community Boards 9 and 10. It is a very ethnically diverse neighborhood with European, South Asian, and Latin American enclaves. The neighborhood can be accessed by subway via the J and Z trains that traverse the Jamaica Avenue corridor, and via the A train that follows the Liberty Avenue corridor. Many of the commercial corridors can also be easily accessed via interstate highway, as they are located just west of I-678 (Van Wyck Expressway).

**Resident Age**



■ Under 18 years 
 ■ 18 to 24 years 
 ■ 25 to 44 years  
■ 45 to 64 years 
 ■ 65 and over

**Employment by Industry**



■ Education and Health Care  
■ Retail Trade  
■ Transportation and Warehousing  
■ Arts, Entertainment, Accommodation, Food Svc  
■ Professional and Administrative Services  
■ Construction  
■ Finance and Insurance  
■ Other Services  
■ Manufacturing  
■ Wholesale Trade  
■ Public Administration  
■ Information  
■ Agriculture and Mining

Demographics	Richmond Hill Study Area**	Queens		
<b>POPULATION*</b>	<b>45,879</b>	<b>100.00%</b>	<b>2,230,722</b>	<b>100.00%</b>
White*	7,172	15.63%	886,053	39.72%
African American*	8,058	17.56%	426,883	19.14%
Asian*	14,531	31.67%	511,787	22.94%
Some other race*	10,295	22.44%	305,286	13.69%
Two or more races*	5,740	12.51%	100,913	4.52%
Foreign Born	28,242	61.56%	1,073,052	47.09%
Hispanic*	10,681	23.28%	613,750	27.51%
<b>AGE</b>	<b>46,167</b>	<b>100.00%</b>	<b>2,278,860</b>	<b>100.00%</b>
Under 18 years	12,231	26.49%	493,313	21.65%
18 to 24 years	4,145	8.98%	190,110	8.34%
25 to 44 years	14,337	31.05%	720,895	31.63%
45 to 64 years	11,757	25.47%	576,249	25.29%
65 and over	3,697	8.01%	298,293	13.09%
<b>EDUCATION (25+ Yrs)</b>	<b>29,350</b>	<b>100.00%</b>	<b>1,595,437</b>	<b>100.00%</b>
Less than High School	8,812	30.02%	323,448	20.27%
High school graduate/GED	11,312	38.54%	468,988	29.40%
Some college	3,374	11.50%	230,231	14.43%
College degree	4,993	17.01%	411,680	25.80%
Graduate/professional degree	1,039	3.54%	161,090	10.10%
3+ Years Enrolled in School	13,456	45.85%	551,565	34.56%
<b>HOUSING (total units)*</b>	<b>13,352</b>	<b>100.00%</b>	<b>835,127</b>	<b>100.00%</b>
Occupied*	12,595	94.33%	780,117	93.41%
Vacant and Vacancy Rate*	757	5.67%	55,010	6.59%
Households with at least one vehicle	7,994	63.47%	500,201	64.15%
<b>HOUSEHOLD INCOME</b>	<b>11,892</b>	<b>100.00%</b>	<b>779,776</b>	<b>100.00%</b>
Less than \$15,000	1,264	14.61%	91,985	11.80%
\$15,000 to \$24,999	1,305	8.64%	77,527	9.94%
\$25,000 to \$34,999	1,480	8.20%	77,586	9.95%
\$35,000 to \$49,999	1,830	16.84%	108,472	13.91%
\$50,000 to \$74,999	2,289	27.27%	151,667	19.45%
\$75,000+	3,724	24.44%	272,539	34.95%
Persons Below the Poverty Level	5,993	12.98%	273,715	12.13%
Native	2,362	39.41%	136,412	49.84%
Foreign	3,631	60.59%	137,303	50.16%
<b>LABOR (16+ years in labor force)</b>	<b>22,913</b>	<b>100.00%</b>	<b>1,185,333</b>	<b>100.00%</b>
Employed	21,091	92.05%	1,092,612	92.18%
Unemployed	1,822	7.95%	92,721	7.82%
<b>EMPLOYMENT (by industry)</b>	<b>20,542</b>	<b>100.00%</b>	<b>1,092,612</b>	<b>100.00%</b>
Agriculture and Mining	11	0.05%	1,265	0.11%
Construction	1,911	9.30%	78,546	7.19%
Manufacturing	1,018	4.96%	56,935	5.21%
Wholesale Trade	756	3.68%	35,652	3.26%
Retail Trade	2,632	12.81%	113,329	10.37%
Transportation and Warehousing	2,306	11.23%	87,298	7.99%
Information	351	1.71%	32,422	2.97%
Finance and Insurance	1,371	6.67%	101,480	9.29%
Professional and Administrative Services	1,987	9.67%	110,584	10.12%
Education and Health Care	4,224	20.56%	245,655	22.48%
Arts, Entertainment, Accommodation, Food Svc	2,010	9.78%	112,214	10.27%
Other Services	1,283	6.25%	72,051	6.59%
Public Administration	682	3.32%	45,181	4.14%

Source: US Census Bureau American Community Survey 2005-2009 5-Year Estimates, \*2010 US Census

\*\* Data for Richmond Hill study area covers the following census tracts: 38, 40.01, 98, 106, 108, 110, 112, 148, 150 152, 154, 156, 158, 164

## Commercial Corridors

### Liberty Avenue

Liberty Avenue is a multi-purpose retail corridor with significant percentages of square footage devoted to convenience, comparison goods, services and light industry. Most of the mixed-use properties are two-story buildings with residential units on the upper floor and commercial use on ground level. The liberty Avenue commercial corridor extends approximately 40 blocks and consists of over 700 businesses.

### 101st Avenue

101st Avenue continues to attract new small retail businesses catering to the South Asian community. The corridor is not as dense as Liberty Avenue but hosts several ethnic clothing and grocery stores. 101st Avenue is home to the majority of cultural and religious centers representing the diverse population of Richmond Hill

## **BUSINESS ESTABLISHMENTS IN SOUTH RICHMOND HILL**

<b>Industry</b>	<b>Total</b>	<b>Percent</b>
Construction	83	13.03%
Residential Remodelers	18	2.83%
Single Family General Contractors	17	2.67%
Manufacturing	10	1.57%
Wholesale Trade	26	4.08%
Retail Trade	186	29.20%
Supermarkets and Grocery Stores	24	3.77%
Electronic Stores	15	2.35%
Transportation and Warehousing	20	3.14%
Information	3	0.47%
Finance and Insurance	33	5.18%
Real Estate	29	4.55%
Professional Services	39	6.12%
Administrative	23	3.61%
Education	8	1.26%
Health Care	60	9.41%
Accommodation and Food Services	55	8.63%
Other Services	62	9.73%
General Auto Repair	13	2.04%
Beauty Salons	11	1.73%

Source: US Census Bureau 2008 Zip Code Business Patterns (11419)

## **Community Assets**

- Strong, diverse retail sector well-positioned along major commercial corridors
- Convenient access from mass transit (A train) and from Van Wyck Expressway, Atlantic Avenue
- Ethnically diverse with South Asian, Central and South American communities
- Presence of strong cultural and religious institutions